

**SANY HEAVY INDUSTRY INDIA PVT. LTD.**

**HEAD OFFICE**

Address : Plot No. E-4, Chakan Industrial Area Phase-III,  
 Village Kuruli, Taluka Khed, District Pune - 410501,  
 Maharashtra, INDIA.

E-mail : [customercare@sany.in](mailto:customercare@sany.in)

Website : [www.sany.in](http://www.sany.in)

Toll Free No.: 1800-209-3337



Material & specification are subject to change without prior notice in accordance with our continuous technical innovations. Featured machines in photos may include additional equipment.

March 2022

**NEW**



Operating Weight : 14030 kg    Bucket Capacity : 0.72 m<sup>3</sup>    Engine Power : 100.5 HP (75 kW)/ 2200 rpm

**QUARRY**

**HIGH** RELIABILITY  
 PERFORMANCE  
 SERVICEABILITY



**SY140C-9/9S**  
 HYDRAULIC EXCAVATOR

# TOUGHEST & POWERFUL TOOL FOR QUARRY APPLICATIONS

## Reliable track link & rollers

Improved center cross section area of Track link which offers enhanced service life in hard strata

- More service life
- High strength



## Ultra HD tack chain

19% Increased track shoe thickness with improved load bearing capacity

- Enhanced track chain service life
- Low maintenance cost



## SANY Rock breaker & Rock breaker piping kit as option. Breaker working mode as standard

Dedicated breaker working mode with piping kit for quarry application

- More productivity
- Versatile application



## Robust swing body structure

Forged ring body provides more strength in toughest quarry applications

- High strength
- More service life



## Strengthened Idler mounting area

Extra ribs & reinforcement plates on idler mounting area for high durability

- Rigid idler mounting
- High service life



## Heavy Reinforced boom mounting area

Extra reinforcement on boom foot area enhances the load bearing capacity while working in quarry.

- Longer service life
- More strength



## Highly durable front attachments

Forged type pivot end & center supports ensures high durability in quarry

- High service life
- More earnings



## Cabin front & top guard as Standard

Cabin front & top guard as standard offering for more operator safety while working in quarry with breaker

- High safety
- More comfort



## Turbo type air pre cleaner (C-9S)

Turbo type air pre cleaner ensures clean Engine air intake system

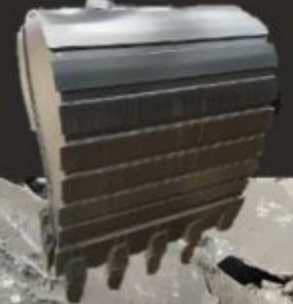
- Low maintenance cost
- More earnings



## Robust & reliable multi-purpose bucket

Extra wear plates on bucket makes it more robust in tough applications

- Low maintenance cost
- More bucket life



### EXCELLENT PERFORMANCE

- Fuel efficient & powerful engine options (Cummins –SY140C-9S & Isuzu-SY140C-9)
- Positive flow hydraulic system
- DOMCS with 4 working modes
- Boom & Arm regeneration system
- Boom priority system



### EXCELLENT SERVICEABILITY

- Self diagnosis system
- 2 Stage fuel filtration system
- Service reminder
- Air filter clogging indicator
- Travel & swing utilization hours tracking
- Drain valve for hydraulic tank

### BEST-IN CLASS RELIABILITY

- Ultra heavy duty track chain assembly
- Forged swing ring body
- Reinforced idler mounting area
- Big cross-section boom & arm with forged centre pivot
- Proven Branded Reliable components
- Turbo type air pre-cleaner as standard

### BEST-IN CLASS SAFETY

- Front & top cabin guards
- Hydraulic accumulator as standard
- Critical warning alerts & indicators
- Under covers & belly guard as standard
- Wire mesh guard for ROC
- Hydraulic lock engine cranking system

### BEST-IN CLASS OPERATOR COMFORT

- High operating weight leads to better stability
- Powerful air conditioned cabin as option
- Multi-angle adjustable suspension seat
- Thin & effortless joysticks
- Informative digital colour display
- Breaker operating mode for easy tool selection

### BETTER REMOTE MONITORING SYSTEM ( SANY EVI)

- Real time machine tracking
- Easy m/c health monitoring
- Easy tracking of nearest SANY network
- M/C past movement tracking
- M/C maintenance management

**EXCELLENT PERFORMANCE**

SY140C-9/9S QUARRY excavator is designed for excellent performance with combination of superior fuel economy and best in class productivity.



**SUPERIOR FUEL EFFICIENCY**

**DYNAMIC OPTIMIZATION MATCHING CONTROL SYSTEM (DOMCS)**

DOMCS ensures quick response to the change of operating variables in order to achieve optimum engine & hydraulic power control as per the external load demand, facilitating the optimum control of excavator operation system.

**WORK MODES AND AUTO IDLE**

SY140C-9/9S QUARRY is equipped with 4 working modes (H,S,L,B) to match engine speed, pump speed and system pressure with versatile work application. Automatic idle function reduces fuel consumption significantly leading to reduced operating cost.

**HIGH PRODUCTIVITY**

**POWERFUL ENGINE OPTIONS**

SY140C-9S QUARRY is powered by Cummins engine & SY140C-9 QUARRY powered by Isuzu engine with exceptional work capacity and optimize fuel economy for moving heavy material quickly and efficiently.

**ADVANCED POSICON HYDRAULIC SYSTEM**

When the machine deals with an operating requirement of moving heavy material quickly and efficiently, it needs the best hydraulic power that SY140C-9/9S QUARRY offers.

The advance control valve which has been thoroughly optimized provides excellent performance in combined operations.

Hydraulic valves ensure that oil flow is available at the point of priority as per required flow. This results in the best available power with optimum fuel consumption.

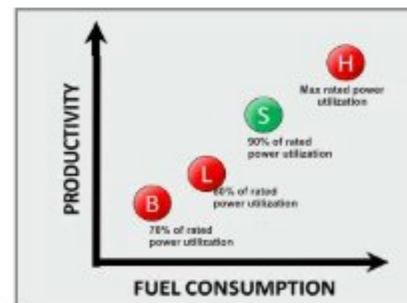
During boom lowering & arm opening operation, regeneration feature results into faster movement by routing oil through regeneration valve. It prevents cavitation and enhances cylinder performance. This reduces friction losses, pressure drops ensuring more power to the ground for heavy duty applications.

**SANY ROCK BREAKER WITH RBC (OPTION)**

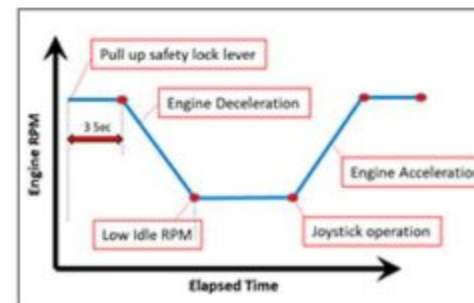
Robust & reliable newly introduced SANY Rock Breaker with return line filter incorporated customized RBC kit provide enhanced output in Rock breaker application.



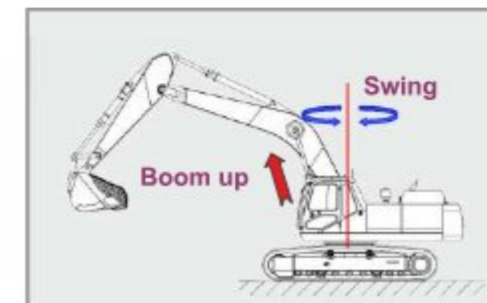
Powerful & fuel efficient engine options( Cummins/ Isuzu)



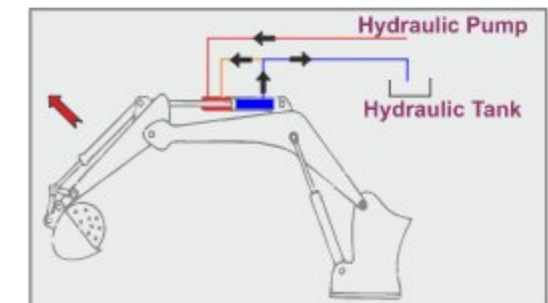
Optimized power mode selection



Engine auto Idle System



Boom Priority System



Regeneration System (Boom & Arm)



**HIGH RELIABILITY**

The Boom & Arm is made up of large box-type structure welded with high strength steel plates. Internal buffel plates are added on boom & arm structure for excellent torsional resistance & which leads to unmatched durability while working in heavy duty applications.

**ROBUST STRUCTURE & UNDERCARRIAGE**

**NEW ULTRA HD UNDERCARRIAGE**

SY140C-9/9S QUARRY now comes with new Ultra HD track chain for enhanced life in quarry & similar underfoot conditions.

Newly designed track link with increased compressive strength & load bearing area ensure best-in class track chain service life.

- Increased track link contact surface area for higher wear limits.
- Increased cross section area & link height will provide longer life.
- 19% increased track shoe thickness provide High Strength and durability
- 37% Heavy track shoe & 4% Heavy links for enhanced strength.
- New design link with optimum angle leads to reduced clearance between Roller & Link surface and thus improve load bearing capacity.
- Optimum idler oil chamber improve the performance of floating seal & provide high service life.
- Forged mono piece swing ring body provide optimum strength & reliability while working in quarry.
- Anti-collision ribs at the idler mounting area.

**REINFORCED ARM**

Arm's rear support is specially reinforced offering excellent torsional resistance imparting greater strength to the arm assembly to perform longer.

**WEAR RESISTANT BUCKET**

High strength bucket surface gives longer service life. Optimized design helps in reducing rock and sand resistance in turn decreases wear of the bucket body while digging.

**HIGH STRENGTH UPPER FRAME**

Heavy duty upper frame is designed to improve bending strength of the platform. D-shaped large section stronger beam can withstand external shocks.

**X-TYPE FRAME AND BOX TYPE STRUCTURE**

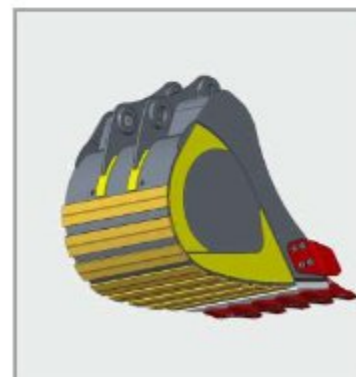
It has high strength and stiffness with excellent torsional and bending resistance. Reinforcing plate has been added to improve the strength of the lower frame. This improves working life.



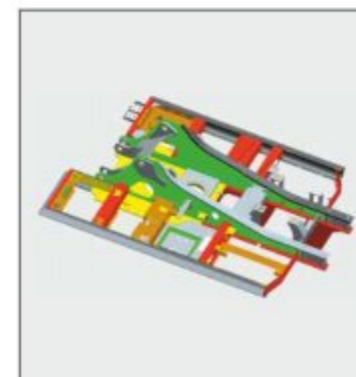
Ultra HD Track Chain



Heavy Duty Boom & Arm



Robust Bucket



Heavy Duty Upper Frame



X Type Frame



Strong & Reliable U/C Components



**BEST IN CLASS OPERATOR COMFORT**

Spacious cabin comes with superior comfort features for fatigue-less operations in toughest applications



**SUPERIOR COMFORT MEETS HIGH PERFORMANCE**

**COMFORT**

**MULTI-DUCT AIR CONDITIONING SYSTEM (OPTIONS)**

The large capacity air conditioner keeps in-cab air fresh by purification & recirculation which reduces operator fatigue.

**ADVANCE SILICON OIL RUBBER SHOCK ABSORBERS**

Cabin structure is attached to upper frame with silicone viscous shock absorber which effectively dampens vibrations while enhancing operator comfort.

**PRESSURIZED HERMETIC CABIN**

Cabin is air tight sealed and is dust free. It prevents dust entry into cabin gadgets by maintaining pressure variation between cabin and outside atmosphere.

**ERGONOMICALLY DESIGNED JOYSTICK**

Control levers and joysticks control are smartly designed for horizontal and vertical stroke of joystick for low lever effort.

**CLEAR VISIBILITY**

Larger windows of the newly-designed spacious cabin provides the operator a wider view. The operator can clearly see the work equipment condition and the surrounding through the front, side and back windows.

**NEW 7<sup>TH</sup> INFORMATIVE DIGITAL COLOUR DISPLAY**

New Intelligent display act as an Interface between the operator and the machine with lots of information which leads to peace-of-mind operation. (Mode selection, Self Diagnostics, critical warning alerts, operating parameters, maintenance reminder, Travel & Swing Utilization data, and many more details.)

**MULTI-ANGLE ADJUSTABLE SUSPENSION SEAT**

Fully adjustable suspension seat makes the operator more comfortable while working in toughest job sites with irregular surface.

**MULTIFUNCTIONAL MUSIC SYSTEM**

Ergonomically mounted music system with FM/AM radio makes the operator more comfortable while working.



Multi Duct AC (Option)



Silicon Oil Rubber Shock Absorber



Multi Angle Adjustable Seat



Low Effort Joystick



multifunctional music system



High Visibility



7" color display

**BEST IN CLASS SAFETY**

Enhanced safety features are adopted in Sany SY140C-9/9s Quarry for ensuring higher safety to the operator as well as the machine while working in quarry applications.

**FOPS COMPLIED RIGID CABIN**

SY140C-9/9S Quarry offered with FOPS complied cabin, which protects the operator from falling objects while working in toughest conditions in quarry mines.

**CABIN FRONT & TOP GUARD AS STANDARD**

Cabin front & top guard protects the operator & cabin from flying debris & provides enhanced safety.

**HYDRAULIC ACCUMULATOR AS STANDARD OFFERING**

Hydraulic accumulator helps the operator to bring down the machine front attachment to the ground level without starting the engine when emergency.

**BELLY GUARD & UNDER COVERS**

Hydraulic operations lock out switch completely isolates hydraulic functions to prevent unintended machine movements and ensures higher safety.

**ANTI ENGINE RESTART SYSTEM & HYDRAULIC LOCK ENGINE STARTING SYSTEM**

Anti engine restart system prevents the starter motor from reengage while engine is ON. Thus saves starter motor from damage. Safe start of the engine is ensured with hydraulic lock engine starting system. It prevents sudden machine movement while starting and ensures safe start at the site.

**SAFETY HEAT SHIELD & COOLING FAN GUARD**

Heat shield on turbo charger and safety guard on cooling fan prevents direct contact to high temperature or finger being caught by fan while doing maintenance.

**OTHER SAFETY PROVISIONS**

Operator cabin is equipped with safety hammer, fire extinguisher, seat belt to ensure higher safety. Anti slip stickers on upper frame provides enhanced safety to the operator while carrying out the maintenance or regular check-ups.



**BEST IN CLASS SAFETY FOR  
HIGH ADAPTABILITY**



FOPS complied cabin



Cabin front guard & top guard



Hydraulic accumulator



Belly guard as STD



Hydraulic safety lever



Cooling fan guard



Operator Seat belt

**EASE OF SERVICEABILITY**

The use of OEM parts and quality elements effectively extends the service life and maintenance intervals. The time for maintenance is also reduced. Remote installation of replacement parts gives easy maintenance, higher utility and lower service cost.



**EASY ACCESS**

**FILTER REPLACEMENT COMFORT**

Access to the various filters such as fuel filters, hydraulic pilot filter, AC Filter & Air filters are easy as it can be serviced from ground level.

**EASY CLEANING FOR RADIATOR**

Radiator and oil cooler packing is easily washable from ground level which leads into excellent cooling capacity and ensures prolonged engine running without being overheated.

**DRAIN PLUG ARRANGEMENT**

Radiator, fuel tank, hydraulic tank and engine oil pan are provided with drain-plug at the bottom to flush out the debris and waste liquids at the time of oil replacement and cleaning. The tank bottom has drain plug guard to prevent physical damage.

**TWO-STAGE FUEL FILTRATION SYSTEM**

The fuel filter system is conveniently placed for easy access with two stage filtration system & additional strainer, high efficiency fuel filtration is possible and leads high service life of the equipment.

**EASE OF REGULAR CHECK UP**

Regular performing components (swing gear greasing, engine oil and hydraulic oil ) of the machine can be easily checked up which leads to time saving and long working ability.

**LARGE LCD COLOR DISPLAY**

Cabin is equipped with waterproof, dust proof and vibration proof anti-interference colour LCD display which provides real-time information regarding machine working status, abnormal alarm function etc. ensuring safe operation.

**IMPROVED GREASING**

Centralized greasing points are provided for easy greasing of various points of boom assembly.



Wire-mesh Protected Air Filter



AC Filter Location



Wire-mesh Guard for Radiator



Drain Plug



Water Separator



Engine Oil Level Check-up Access



Hydraulic Oil Level Check-up Access



Large LCD Color Monitor



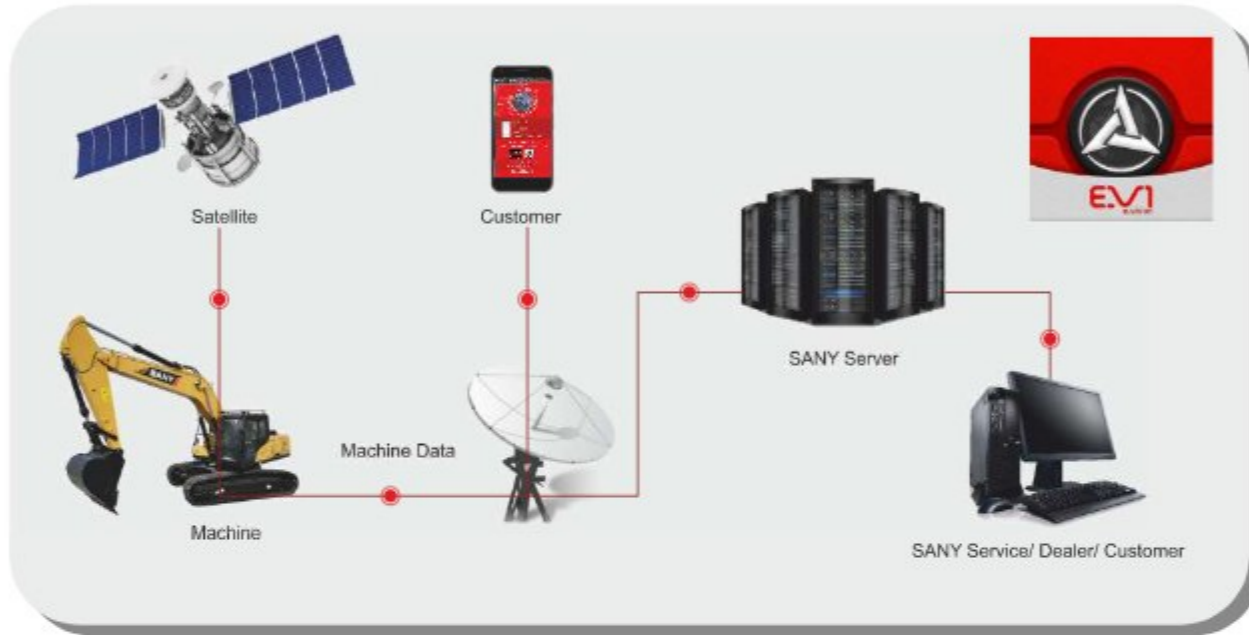
Centralized Greasing Points





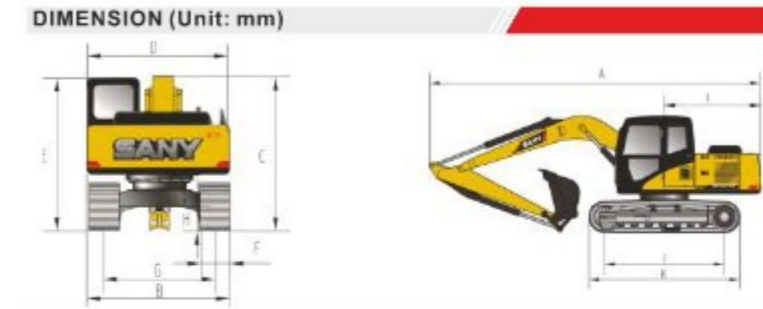
**EVI REMOTE MONITORING**

EVI in SANY C-9 series excavators is a sophisticated system that helps you to remotely monitor wide range of excavator functions and access operating information.

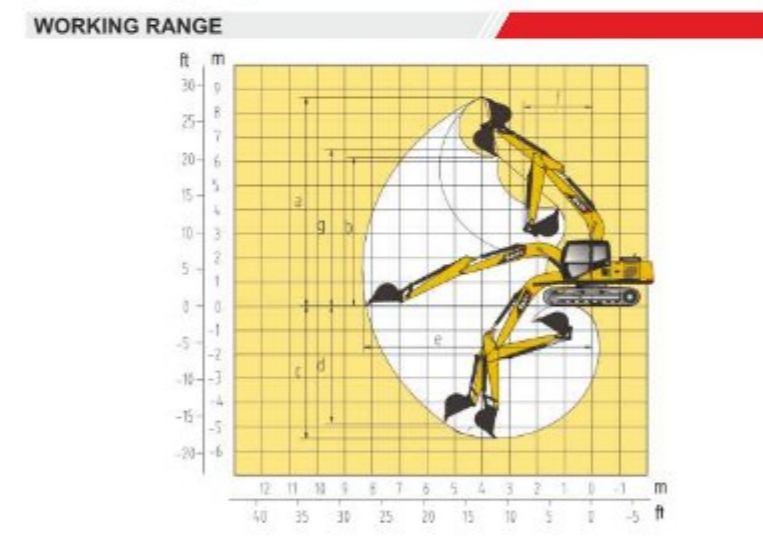


**TECHNICAL SPECIFICATIONS**

ENGINE	
Make & Model	Cummins B3.9-100c/ Isuzu 4BG 1-TABGC-03-c2
Type	4 Cylinder, In-line, Water Cooled
Rated Engine Power	100.5HP(75kw)@2200rpm/ 98HP(72.7kw)@2200rpm
Max. Torque	385Nm/1300rpm/357.6Nm@1600rpm
Battery	2 X 12 V
Displacement	3.9 L/4.329L
CONTROL SYSTEM	
Control System	DOMCS Intelligent Controller
Control Hydraulic System	Positive Flow
Working Modes	H, S, L, B
Remote Monitoring System	GPRS, GPS, GIS
HYDRAULIC SYSTEM	
Main Pumps	2 Variable Displacement Axial Piston Pumps
Max. Flow	2x121 lpm
Pilot Pump	1 Gear Pump
Travel Motor	2 Axial Piston Motor with Parking Brake
Swing Motor	1 Axial Piston Motor with Swing Holding Brake
RELIEF VALVE SETTINGS	
Implement Circuit	31.4 Mpa
Swing Circuit	25 Mpa
Travel Circuit	31.4 Mpa
Pilot Circuit	3.9 Mpa
UNDERCARRIAGE & WORKING DEVICE	
Track Shoes (Each Side)	44
Upper Roller (Each Side)	1
Lower Roller (Each Side)	7
Track Guard (Each Side)	1
Std. Track	500 mm
Std. Boom	4600 mm
Std. Arm	2100 mm
Std. Bucket	0.72 m <sup>3</sup> Multi-purpose Bucket
PERFORMANCE	
Max. Travel Speed(High/Low)	5.5 / 3.5 km/h
Swing Speed	12 rpm
Grade ability	70% / 35°
Ground Pressure	43.1 kPa
Max. Tracking Force	124.1 kN
Bucket Digging Force	93.6 kN
Arm Digging Force	68.9 kN
SERVICE REFILL CAPACITIES	
Hydraulic Tank	120L (Tank) 150L (Refill)
Fuel Tank	240 L
Engine Oil	9 L
Radiator	6.7 L
Swing Device	3 L
Travel Device	2x2.22 L
CAB	
AC	Opt.
Cabin Guard	Opt.



DIMENSION (Unit: mm)		Arm 2100
A. Overall Length		7700
B. Overall Width		2510
C. Overall Height		2765
D. Upper Width		2517
E. Overall Height of Cab		2825
F. Std. Track Shoe Width		500
G. Track Gauge		1990
H. Min. Ground Clearance		425
I. Rear-end Swing Radius		2285
J. Distance between Tumbles		2930
K. Under Carriage Length		3665



WORKING RANGE (Unit: mm)		Arm 2100
a. Max. Cutting Height		8324
b. Max. Dumping Height		5856
c. Max. Digging Depth		5119
d. Max. Vertical Digging Depth		4127
e. Max. Digging Reach		7952
f. Min. Swing Radius		2410
g. Max. Height at Min. Swing Radius		6496

BUCKET				
Capacity (m <sup>3</sup> )	Width (mm)	Weight (kg)	Tooth Point	Arm Length (m)
0.72 Multi-purpose Bucket	1076	584	5	2.1

**LOCATION & TRACKING**

Machine's current location can be captured for easy tracking.Route to working site of the machine can be determined as well.

**REAL-TIME MONITORING**

The real-time monitoring system displays various operating parameters like engine rpm, coolant temperature & battery voltage etc.

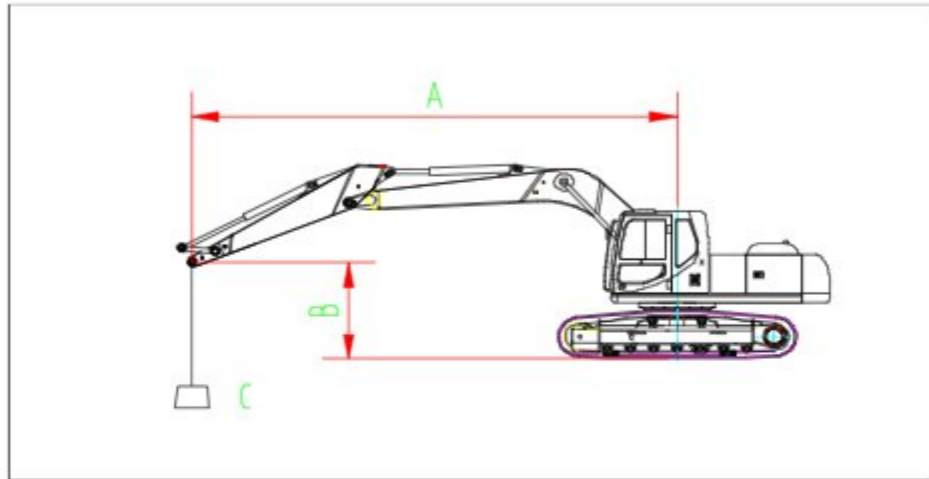
**MACHINE OPERATING MANAGEMENT**

Daily machine operation hours, non-working hours, engine idling time can be monitored and remaining fuel in the diesel tank can be determined.

**EAST ACCESS TO SANY SUPPORT NETWORK**

Customer can easily locate nearest SANY support network & access the touch point any time with the help of EVI system.

**LIFTING CAPACITY**



Rated Lifting Capacity (Kg)																			
A	2m		3m		4m		5m		6m		7m		Maximum						
	☐	⊗	☐	⊗	☐	⊗	☐	⊗	☐	⊗	☐	⊗	☐	⊗					
7m					*3200	*3200							*2550	*2550	4248				
6m							*3150	*3150					*2250	*2250	5336				
5m							*3500	*3500	*2400	*2400			*2100	*2100	6066				
4m					*3950	*3950	*3700	3550	*3550	2700			*2050	*2050	6562				
3m							*5800	*5800	*4650	*4650	*4050	3450	*3700	2650		*2050	*2050	6875	
2m							*7500	6900	*5450	4550	*4500	3350	3900	2600	*2300	2100	*2100	2100	7030
1m							*6800	6600	*6150	4400	*4900	3250	3850	2550	*2450	2050	*2200	2050	7039
0m							*6750	6450	*6500	4250	4900	3150	3800	2500			*2350	2100	6901
-1m	*4550	*4550	*8450	6400	*6550	4200	4850	3100	3750	2450						*2600	2200	6607	
-2m	*6900	*6900	*8150	6400	*6300	4200	4850	3100	3750	2500						*3050	2400	6135	
-3m	*9600	*9600	*7200	6450	*5600	4250	*4350	3150								*3750	2850	5437	
-4m			*5500	*5500	*4150	*4150										*3550	*3550	4402	

Remarks:

1. Rated figure meets the criterion of GB/T 13331-2005/ISO 10576
2. Rated rollover loading is 75% of static rollover loading, rated limiting hydraulic weight is 87% of limiting hydraulic weight.
3. Loading radius is the distance from the loading point to the swing center.
4. The figure with \*stands for the rated figure of the limiting hydraulic weight.

**PRESSURE AND CAPACITIES**

**WEIGHTS AND GROUND PRESSURE**

Model SY140C-9/9S QUARRY			
Shoe type	Shoe width	Operating weight	Ground pressure
Triple grouser	500mm	14030 kg	43 Kpa

**STANDARD EQUIPMENT**

**ENGINE**

- Mode control (H, S, L and B)
- Start motor 24V/5KW
- Alternator 24V/50A
- Air pre-cleaner
- Dry double-filtering air cleaner
- Cylindrical engine oil filter
- Cylindrical fuel filter
- Engine oil cooler
- Radiator with protective screen
- Auxiliary water tank for radiator
- Fan cowl
- Separately installed engine
- Automatic deceleration system
- Accelerating system

**UNDERCARRIAGE**

- Travel motor guard
- H-track guiding mechanism
- Hydraulic track tensioner
- Bolted sprocket
- Carrier roller and track roller
- Reinforced track link with pin and seal
- 500 mm track shoes
- Bottom cover plate

**SWING PLATFORM**

- Hydraulic oil level gauge
- Toolbox
- Rear view mirror (R)
- Swing brake

**HYDRAULIC SYSTEM**

- Working mode selection switch
- Control valve with main relief valve
- Spare oil port for control valve
- Strainer
- Return oil filter
- Pilot filter

**FRONT WORK EQUIPMENT**

- Flange pin
- Central lubrication system
- Dust ring-seal of bucket pin
- Fully-welded box boom
- Fully-welded box arm
- Standard bucket

**ALARM LIGHTS**

- Oil pressure alarm
- engine coolant alarm
- Overheat alarm
- Fuel oil level alarm

**INDICATOR LIGHTS**

- H working mode, S working mode
- L working mode
- Auto-idle, engine warm up
- Engine Oil level,
- engine coolant temperature

**OPERATOR STATION**

- Noise proof steel-structured cab
- Toughened light-color window
- 6 silicone rubber damping support
- Operable roof hatch, upper front window and left window
- Rear window, alternate exit
- Silent window wiper with washer
- Adjustable inclined seat with adjustable armrest
- AM-FM radio with digital clock
- Foot rest and floor mat
- Loudspeaker, rear view mirror
- Seat belt and fire extinguisher
- Cup holder and cab light
- Ashtray alternate hammer
- Storage box, literature bag
- Hydraulic lockout control
- Cabin front & top guard

**OTHERS**

- Standard battery
- Lockup engine hood
- Lockup fuel filler cap
- Anti-skid film, handrail
- Hand grease gun

**OPTIONALS**

- Fully automatic air-conditioner
- Breaker piping kit
- Quick Coupler
- Rock Breaker

**SANY ROCK BREAKER**

SPECIFICATIONS & STD OFFERINGS		
Breaker Model	Units	SYB150
Suitable Excavator Weight Class	Tons	10.0 - 15.0
Total Weight	Kg	861
Total Length	mm	2326
Operating Pressure	Bar	130-160
Impact Rate   Blow Rate	BPM	350-700
Impact Energy	Joules	2100
Chisel Diameter	mm	100
Hydraulic oil flow range	LPM	80-110
N2 Pressure	Bar	16.2
Noise Dampened System		√
Nitrogen Charging Kit		√
Seal Kit		1 Set
Extra Chisel		1 no
Tool Kit		√
High Temperature Graphite Grease		6 Kg
Suitable SANY Excavators		SY120 & SY140